

# USER GUIDE SOFTBOX



CE / CSA / ISO 9001 / ISO 14001 / RoHS



**Please read this manual before assembling SOFT BOX, and keep it for future reference.  
Referez-vous au mode d'emploi avant d'utilizer la softbox.**

SOFTBOXES • FLASHES • ACCESSORIES

[www.rimelite.com](http://www.rimelite.com)

## Index

<b>Introduction</b>	<b>P03</b>
<b>Intellectual Property</b>	<b>P03</b>
<b>Safety Introduction</b>	<b>P04</b>
<b>Unpacking</b>	<b>P05</b>
<b>Assembling Rime Lite Softbox</b>	<b>P06</b>
<b>Accessories</b>	<b>P07</b>
<b>Warranty</b>	<b>P10</b>



- INTRODUCTION

Thank you for your choice for Rime Lite Softbox.

Rime Lite Softbox is designed for professional photographers. It gives quicker and easier operation and great satisfaction for professional photographers.

- Rime Lite telecommunications

Web: [www.rimelite.com](http://www.rimelite.com)

Facebook: rimelites

Twitter: @rimelites

Mail : [info@rimelite.com](mailto:info@rimelite.com)

Headquarters: Hyundai Photonics B/D, 118-16, Chimsan-Dong, Buk-Gu, Daegu, South Korea.

Tel: 82-53-359-1445 / Fax: 82-53-359-0333

- INTELLECTUAL PROPERTY

All intellectual property, owned by or which is otherwise the property of Rime Lite or its respective suppliers relating to Rime Lite Softbox, including but not limited to, accessories, parts, or software, is proprietary to Rime Lite. No title to or ownership in the intellectual property is transferred to you. All applicable rights of the intellectual Property shall remain with Rime Lite and its suppliers.



# Safety Instructions

*Please read and understand all the instructions to avoid injury to yourself and/or damage to Rime Lite Softbox*

- Do not expose to extreme temperatures ( above 140°F or below -4°F, or above 60°C or below -20°C).
- Do not expose to moisture. Do not use Rime Lite Softbox near water.
- Do not let any foreign matter spill into Rime Lite Softbox
- Do not expose to chemicals such as benzene and thinners. Do not use liquid or aerosol cleaners. Clean with a soft damp cloth only.
- Do not expose to direct sunlight or heat sources for a prolonged period.
- Do not try to disassemble and/or repair Rime Lite Softbox yourself.
- Do not subject Rime Lite Softbox to severe impact,
- Do not place heavy objects on Rime Lite Softbox.
- Do not subject XB PRIME to excessive pressure.
- Do not touch XB PRIME with wet hands
- Do not store in dusty areas.

Please be aware that Rime Lite claims no responsibility for damage from data loss due to breakdown, repair, or other causes.

## Unpacking

Your package contains the following items.



Softbox Dome



Rods

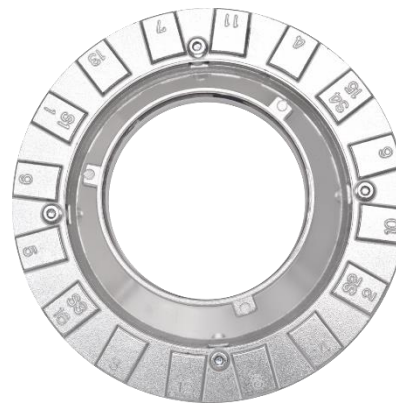


Inner Diffuser



Front Diffuser

- You can obtain the following accessories for Rime Lite Softbox from your local dealer:



Speedring Adapter

## Assembling Rime Lite softbox

1. Check each hole number on Speedring.
2. Insert Rods into speedring according to Diagonal direction.
  - Square & Rectangular box = 1 – 3 – 2 – 4
  - Strip box = 1 – 3 – 2 – 4
  - Octagon box = 1 – 2 – 3 – 4 – 5 – 6 – 7 – 8

**Exception** -Grand softbox = 1 – 2 – 3 – 4 – 5 – 6 – 7 – 8 – 9 – 10 – 11 – 12 – 13 – 14 – 15 – 16

3. After completing inserting the rods, check out each rod is inserted correctly.
4. Tuck up the release corner of the softbox like below images.

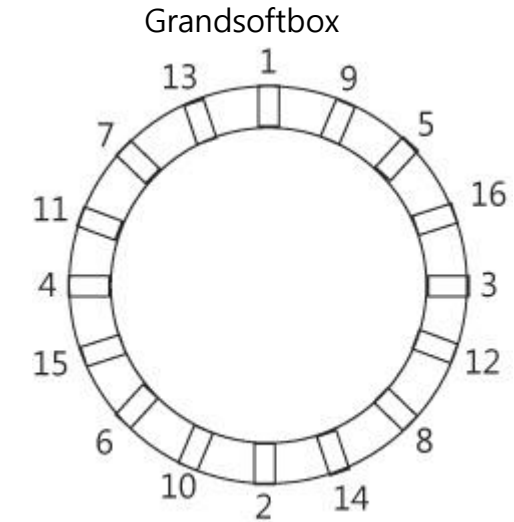


Installing Inner diffuser: Connect each hook to the strap of inside of the softbox.

Attaching Front Diffuser: Attach front diffuser on the Velcro of softbox.



- Refer to a video entitled "How to set up Rime Lite softbox" on Youtube



## Accessories





SBC-BALCAR    SBCP-BRONCOLOR(Pulso)    SBMB-COMET(B)  
 SBCI-BRONCOLOR(Impact)    SCMA-COMET(A)    SCT-COURTNEY



SDL-DYNLITE    SEC-ELINCHROM    SHSE-HENSEL(Expert)  
 SET-ELECTRA    SHR-HD/RIMELITE    SHSM-HENSEL(Mono)



SIF-INTERFIT    SMBP-MULTIBLITZ(Profilux)    SNVA-NOVATRON  
 SJL-JTL    SMBV-MULTIBLITZ(Vari)    SNVB-NOVATRON 2



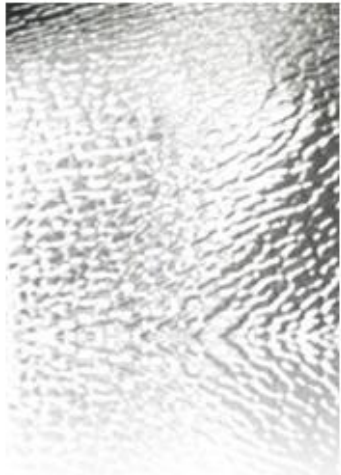
APF-Profoto(Adapter Assembly)    SPPA-PROPET(A)  
 SPF-Profoto    SPPB-PROPET(B)    SPG-PHOTOGENIC



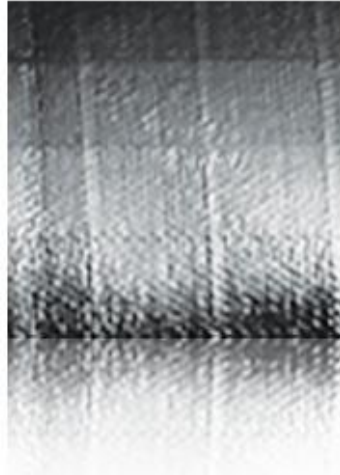
APN-PHOTONA    SST-SPEEDOTRON    STK-TOKINA    SRO-Seeding only  
 S16-For Grand Softbox    SSS-SUNSTAR    SIO-Inside ring only    SNM-NORMAN



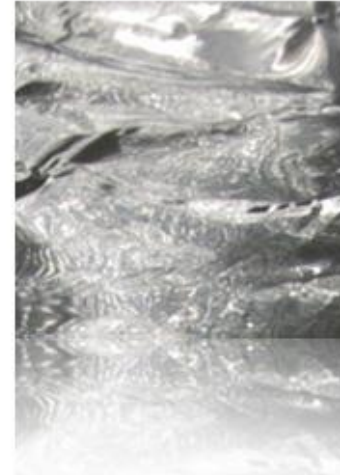
## Fabric



STANDARD



RIME



VIDEO



STANDARD



DOUBLE RIP



VIDEO

Rime Lite is free of defects in material and workmanship for a period of twenty four (24) months from the original date of purchase by the consumer.

If during the period of warranty this product proves defective under normal use and service, you should return the product to the retailer from whom it was originally purchased, or to any Rime Lite authorized dealer or authorized service center, if outside the time limit for returns imposed by the retailer.

- Warranty Conditions

1. The warranty is only valid presentation of the proof purchase consisting of original invoice or sales slip confirmation, indicating the date of purchase, retailer's name, model and serial number. Rime Lite reserve the right to refuse warranty service if this information has been removed or changed after the original purchased of the product from the retailer.
2. Rime Lite's sole obligations are to the repair of the defective part, or at its discretion, replacement of the product (service exchange unit)
3. Warranty repair must be carried out by an authorized Rime Lite dealer/ service center. No reimbursement will be made for repairs carried out by non-Rime Lite, and warranty coverage will not be valid for any repairs or damage caused by such repairs.
4. Repair or replacement under the term of this warranty does not give right to extension to or a new starting of the period of warranty. Repair or direct replacement under the terms of this warranty may be fulfilled with functionally equivalent service exchange units.
5. The warranty is not applicable in cases other than defects in material and workmanship. The warranty does not cover the following:
  - A. Periodic checks, maintenance, repair, and replacement of parts due to normal wear and tear.
  - B. Abuse or misuse, including but not solely limited to the failure to use this product for its normal purpose in accordance with Rime Lite's instructions for usage and maintenance.
  - C. Failure of or damage to the product arising from incorrect installation or use inconsistent with technical or safety standards, or failure to comply with product manual instructions.

