

Gefen

1:2 DVI SL/DL Splitter

EXT-DVI-142DL
USER MANUAL



www.gefen.com

ASKING FOR ASSISTANCE

Technical Support:

Telephone (818) 772-9100
(800) 545-6900

Fax (818) 772-9120

Technical Support Hours:

8:00 AM to 5:00 PM Monday through Friday Pacific Time

Write To:

Gefen, LLC
C/O Customer Service
20600 Nordhoff St
Chatsworth, CA 91311

support@gefen.com

www.gefen.com

Notice

Gefen, LLC reserves the right to make changes in the hardware, packaging and any accompanying documentation without prior written notice.

DVI SL/DL Splitter is a trademark of Gefen, LLC

TABLE OF CONTENTS

- 1 Introduction
- 2 Features
- 3 Panel Descriptions
- 4 Connecting and Operating the DVI SL/DL Splitter
- 5 Equalization Control
- 6 Specifications
- 7 Warranty

INTRODUCTION

Congratulations on your purchase of the DVI SL/DL Splitter. Your complete satisfaction is very important to us.

Gefen's line of KVM (Keyboard Video & Mouse), DVI, ADC, USB, switches, extenders, converters and hubs is designed to make computer use more comfortable, more productive and less expensive.

KVM switches allow access to multiple computers from a single keyboard, while the extenders give the user control over a computer up to 330 feet away from the work area.

The line offers solutions for noise, space and security concerns, data center control, information distribution, conference room presentation, and school and corporate training environments.

The DVI SL/DL Splitter allows computers with Dual Link DVI graphic cards to be connected to one or two Dual Link DVI compatible monitors or projectors.

The DVI SL/DL Splitter also lets you keep your Dual Link DVI monitor next to your computer, while adding a second Dual Link DVI display such as a projector or another Dual Link DVI monitor.

Our Commitment

Gefen will always offer the finest quality product at the best possible price. Included in that price is a lifetime of support from a team of outstanding engineers.

OPERATION NOTES

FEATURES

Features

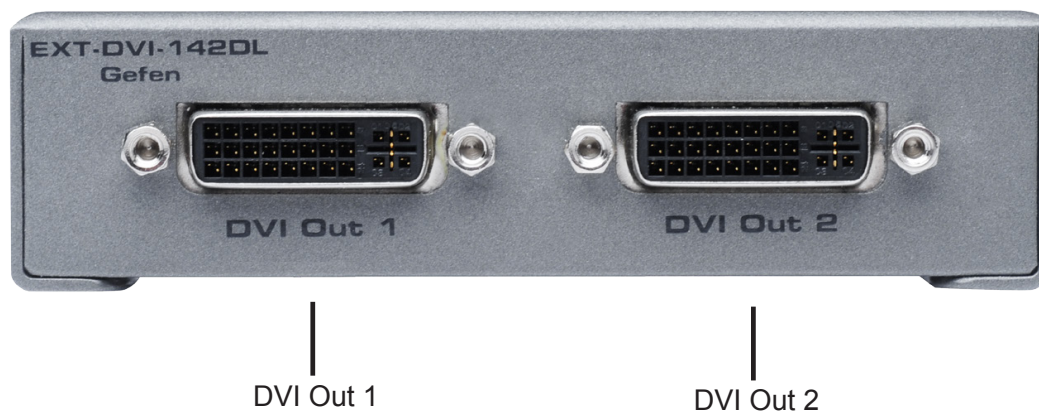
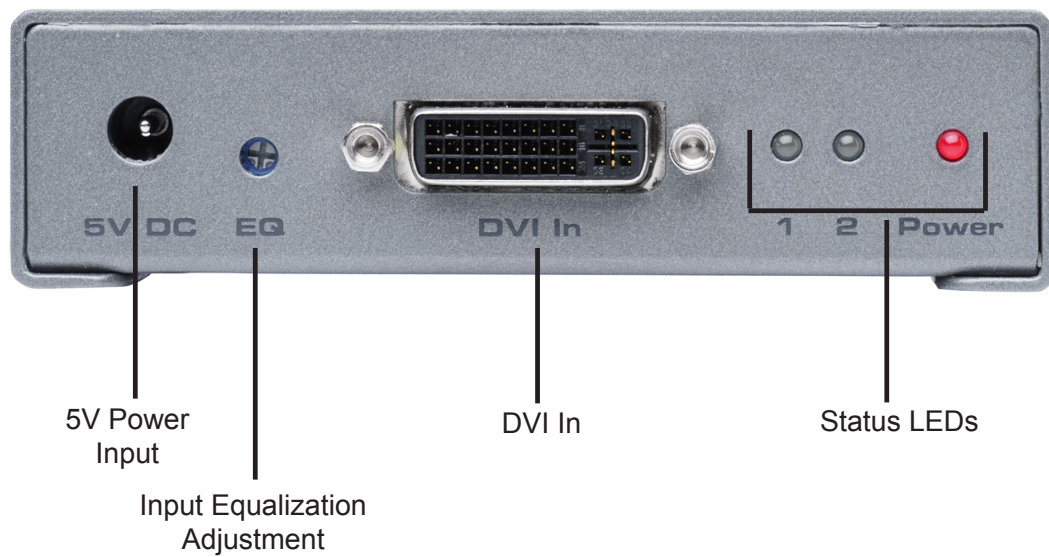
- Splits a dual link DVI signal to two or more dual link DVI displays
- Allows simultaneous display
- Supports 1080p Full HD at 120Hz and dual-link resolutions up to 3840 x 2400
- DVI link status lights
- Supports DDWG standard for DVI compliant monitors
- HDCP pass-through only on output #1

Includes:

- (1) DVI SL/DL Splitter
- (1) 6' Dual Link DVI cable (M-M)
- (1) 5V DC Power Supply
- (1) User's Manual



PANEL DESCRIPTIONS



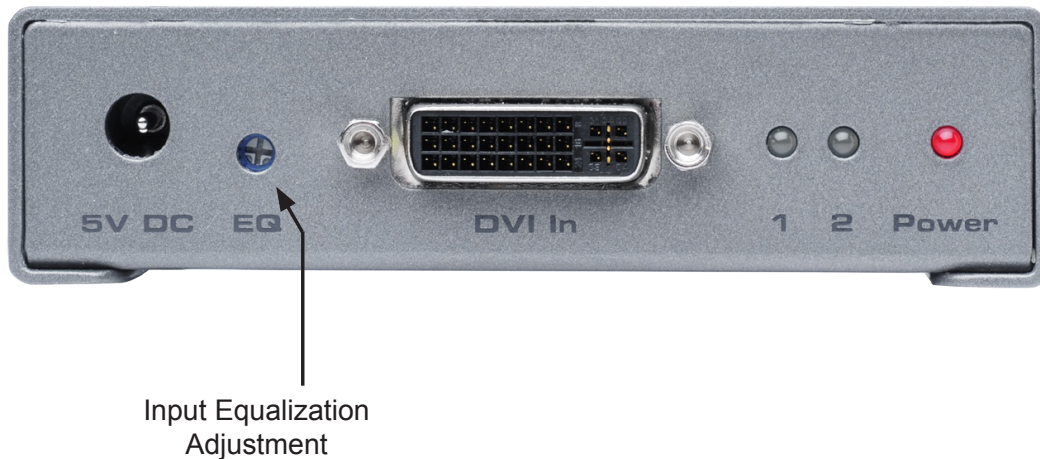
CONNECTING AND OPERATING THE DVI SL/DL Splitter

How to Connect the DVI SL/DL Splitter to your devices

1. Connect the supplied Dual Link DVI cable from the back of the computer into the input of the DVI SL/DL Splitter.
2. Connect the cable from your first display (monitor or projector) into the DVI Out 1 slot on the DVI SL/DL Splitter. (this will be what the computer will recognize)
3. Connect the cable from your second display (monitor or projector) into the DVI Out 2 slot on the DVI SL/DL Splitter.
4. Plug the 5V power supply into the DVI SL/DL Splitter.
5. Plug the 5V wall mount power supply into the wall outlet.
6. Restart your computer only after you've made all the connections.
7. Adjust the EQ to resolve any imperfections in the image.

***Note:** Only output #1 of the DVI SL/DL Splitter is HDCP pass-through.

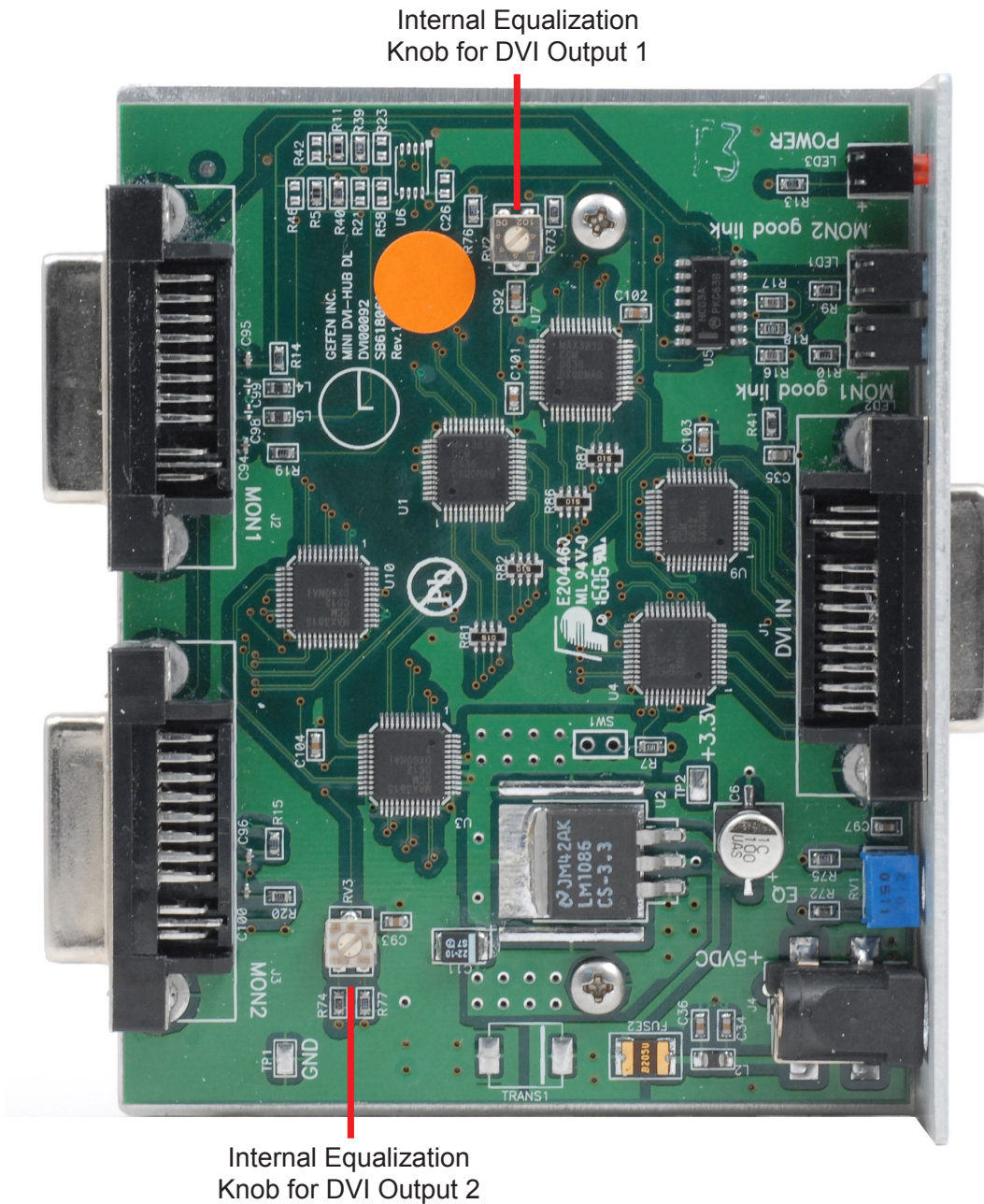
EQUALIZATION CONTROL



The external equalization knob can be used to balance out signal noise resulting from long cables for better picture quality. By turning the equalization knob counter-clockwise you will eliminate any noise and/or degradation in the signal. You should be able to find a "sweet spot" somewhere in the middle.

EQUALIZATION CONTROL

Internal equalization control for the DVI SL/DL Splitter



The internal E.Q. knobs can be reached by removing the 6 hex nuts on the DVI connections and the 4 screws on the bottom of the unit.

These E.Q. knobs control the signal balance of the two DVI outputs.

SPECIFICATIONS

| | |
|--|--------------------------------------|
| Video Amplifier Bandwidth | 2 x 165 MHz |
| Dual Link Range (Max. Resolution) | 1080p, 2K, 3840 x 2400 |
| Vertical Frequency Range | 50 - 85 Hz |
| DVI Input/Output Connector | DVI-I (29 pin) female (Digital Only) |
| Power Consumption | 8.15 Watts (max) |
| Power Supply | 5V DC |
| Dimensions | 4.06" W x 1.06" H x 3.23" D |
| Shipping Weight | 2 lbs |
| Supports HDCP pass-through on the 1st Output | |

WARRANTY

Gefen, LLC warrants the equipment it manufactures to be free from defects in material and workmanship.

If equipment fails because of such defects and Gefen, LLC is notified within two (2) year from the date of shipment, Gefen, LLC will, at its option, repair or replace the equipment, provided that the equipment has not been subjected to mechanical, electrical, or other abuse or modifications.

Equipment that fails under conditions other than those covered will be repaired at the current price of parts and labor in effect at the time of repair. Such repairs are warranted for ninety (90) days from the day of reshipment to the Buyer.

This warranty is in lieu of all other warranties expressed or implied, including without limitation, any implied warranty or merchantability or fitness for any particular purpose, all of which are expressly disclaimed.

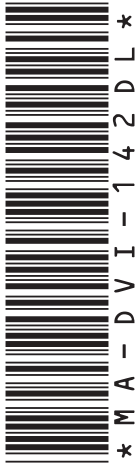
1. Proof of sale may be required in order to claim warranty.
2. Customers outside the US are responsible for shipping charges to and from Gefen.
3. Copper cables are limited to a 30 day warranty and cable must be free from any scratches, markings, and neatly coiled.

The information in this manual has been carefully checked and is believed to be accurate. However, Gefen, LLC assumes no responsibility for any inaccuracies that may be contained in this manual. In no event will Gefen, LLC, be liable for direct, indirect, special, incidental, or consequential damages resulting from any defect or omission in this manual, even if advised of the possibility of such damages. The technical information contained herein regarding DVI SL/DL Splitter features and specifications is subject to change without notice.

For the latest warranty coverage information, please visit Gefen's Warranty web page at <http://www.gefen.com/kvm/aboutus/warranty.jsp>

PRODUCT REGISTRATION

**Please register your product online by visiting Gefen's web site at
<http://www.gefen.com/kvm/Registry/Registration.jsp>**



Rev A7

20600 Nordhoff Street, Chatsworth CA 91311
1-800-545-6900 818-772-9100 fax: 818-772-9120
www.gefen.com support@gefen.com



This product uses UL listed power supplies.

