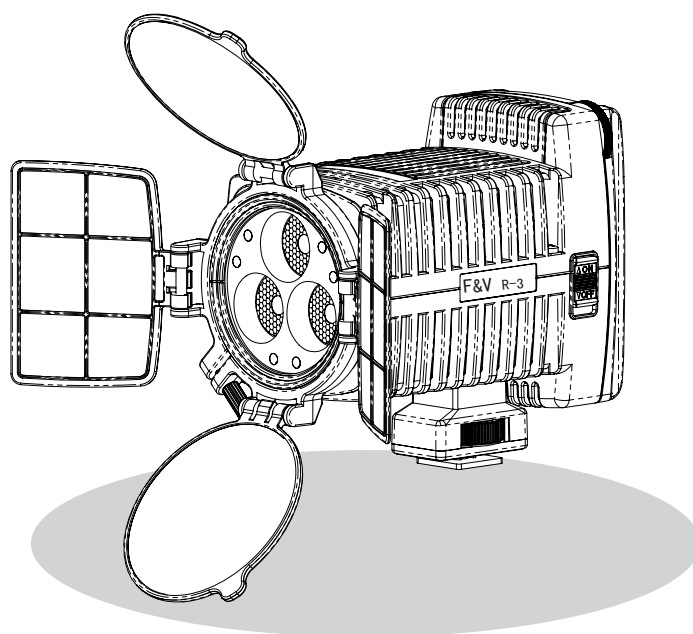




Video Light

R-3 Video Light User Guide



Safety tips

To prevent damage to your F&V product or injury to yourself or to others. Read the following safety precautions in their entirety before using this equipment. Keep these safety instructions where all those who use the product will read them.





Warning

To prevent fire or electric shock, Please do not let the rain hit the device or humid

1. use of non-original match or without of the provisions power supply voltage will damage.
2. Should you notice smoke or an unusual smell coming from the equipment cut off the power. Taking care to avoid burns. Continued operation could result in injury. After cut off the power,take the equipment to a F&V service center to inspection.
3. Do not disassemble. Touching the product's internal parts could result in injury. In the event of Malfunction, the product should be repaired only by a qualified technician.Should the product break open as the result of a fall or other accident, Cut off the power or AC adapter and then take the product to a F&V service center to inspection.
4. Storage and transportation process, please keep out the power separation from equipment, To prevent contact switch, causing no long-term use of temporary nursing equipment, caused a fire.
5. Keep out of reach of children. Failure to observe this precaution could result in injury.
6. Observe(Optional) proper precautions when handling batteries. Batteries may leak or explode if improperly handled.Observe the following precautions when handling batteries for use in this product.
 - Use only batteries approved for use in this equipment..
 - Do not short or disassemble the battery.
 - Be sure the product power is off before replacing the battery.
 - Do not expose the battery to flame or to excessive heat.
 - Do not immerse in or expose to water.

Observe proper precautions when handling the battery charger.

- Keep dry. Failure to observe this precaution could result in fire or electric shock.
- Dust on or near the metal parts of the plug should be removed with a dry cloth. Continued use could result in fire.
- Do not handle the power cable or go near the charger during thunderstorms. Failure to observe this precaution could result in electric shock.
- Do not damage, modify,or forcibly tug or bend the power cable. Do not place it under heavy objects or expose it to heat or flame. Should the insulation be damaged and the wires become exposed. Take the power cable to a F&V service representative for inspection. Failure to observe this precaution could result in fire or electric shock..
- Do not handle the plug or charger with wet hands, Failure to observe this precaution could result in electric shock.

Features

- The device can be installed in the camera lights for photography.
- Can only be used for general-purpose interface of the camera.
- Photography lights ON / OFF can be controlled in the standby mode.

Notes

1. Please do not directly face the light bulb when the Photography lights ON.
2. Never block the ventilation grille by covering it with paper or clothes . could result in injury.
3. Do not expose the equipment to moisture. or it could Short circuit result in injury.
4. Do not placed the photographic lights in nearby such as alcohol or gasoline and other flammable or volatile solvents
5. When the camera light on or against the other items above, please turn off the camera light, or else they may cause fire or damage to photographic light.
6. Do not seize the photographic light head to take up photography cameras.



Notes on the clean

- Use dry soft cloth to clean photographic lights. You can wash with a cloth slightly some neutral detergent to remove difficult to remove the dirt, and then with a soft cloth to dry.
- Do not use strong cleaning agents, such as thinner, gasoline or alcohol, as these solvents may damage the surface of the protective layer

Specifications

Working Voltage	7.4V	Watt loss	10w
Average Life time	30000 h	Cooling mode	Heat sinks, natural ventilation
Illuminance (LX)	500	Color temperature (K)	5800K/3000K
Color rendering	≥80%	Illumination angle	80°
Soft mode	Soft-film standard	color temperature Transform	3000k standard filter
Box volume	230 x 147 x 97mm	Packing Piece	30 PCS

Color temperature adjustment filter (option)

Amber film 3000K Amber film 4000K Red(R) Green(G)

Bule(B) Yellow (Y) Magenta (M) Cyan(C)

Standard Package contains:

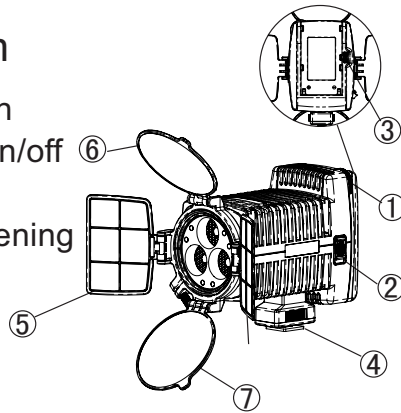
1. R-3 LED lamp holder one Piece (Including Amber film 3000K one piece, Soft-film one piece, barn door two piece).
2. NP-F550 battery one piece.
3. NP-F550 battery charger one piece.
4. 1/4 double-spigot screw adapter one piece
5. Instruction manual.

Design and specifications subject to change without notice.

A Photography lights will be installed in the camera or photographic camera lights before removed, is required to set the power switch in OFF.

Parts diagram

1. Dimming switch
2. Mains switch on/off
3. Battery lock
4. Hot shoes fastening intortum
5. Barn door
6. Soft-film
7. Amber film



Photography lights installed

1. Rotating photographic lights, make it with the consistent direction of the camera lens
2. Photography lights interface will be inserted into the interface of the camera concave-shaped
3. Clockwise rotating locking until locked in place

Photographic lights removed

The opposite direction along the arrow anti-clockwise rotating locking to Release it
The opposite direction along pull out the photographic light, removed it

B The use for photographic light

1. To following the picture to install the battery, when heard a weak "pyridaben carbazole" sound the installation is completed.
2. When need to replace the battery push the battery lock ③ in accordance with the arrow direction to promote the battery can be unloaded.
3. When you turn on the photographic light please set the power switch to "ON"
4. When you turn off the photographic light please set the photographic light to "OFF"
5. To following the picture to push dimmable ① it will be adjust the illumination scope between 20% to 100%
6. According to filming luminous efficiency need to select color temperature, Without the filter Color temperature is 5600K for daylight. Use the Amber film the luminous efficiency color temperature is 3000K.
7. Want Soft, you can use the equipment soft-film. soft-film can also working with the Amber film in the same time.

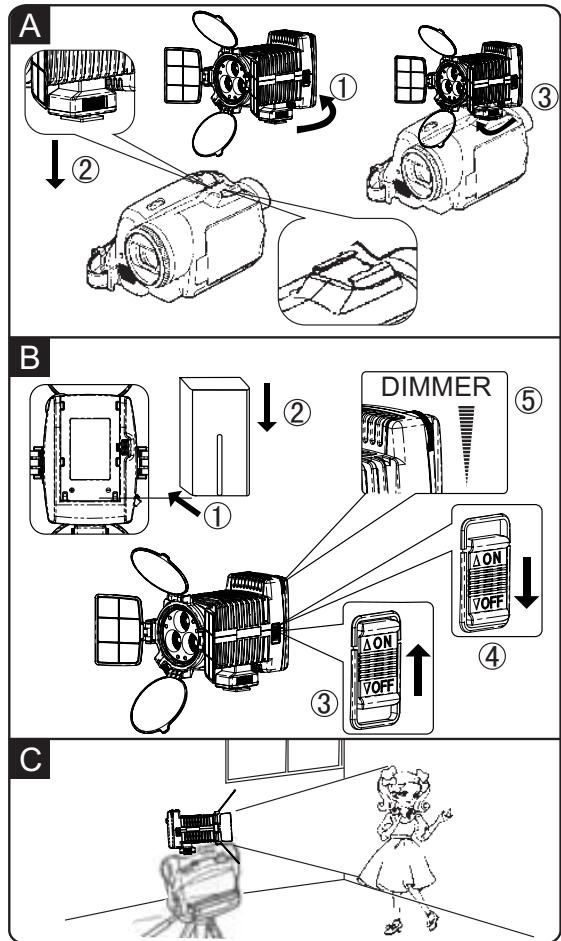


Note

1. When the electric will run out of time, power will be cut off, after few seconds it will re-open, it can still light up a few seconds, then will be cut off again. Please replace the batteries at this time, to prevent influence on use.
2. After use Please set the power switch to "OFF"
3. When not in use, please remove the battery and then bring photographic lights stored in boxes.
4. In storage before, make sure photography lights are cool.

C Lighting for photography objects

- When using this device in indoor photography, you get beautiful clear color image.
- For ultra-wide angle photography, photography light images may not be able to complete the line shine. Please effective use of photography has been light on the main photography objects on camera.
- In photography under fluorescent screen may make some shine. Light may improve the use of photographic color film of the ambiguity in order to better screen quality.



Fuzhou F&V Photographic Equipment Co.Ltd

C Building, No.71 Fuguang Road,
Fuxing Industrial Development Zone, Fuzhou City,
Fujian, 350015, P.R.China
Tel : +86 591 88088018, 88088028
Fax: +86 591 87324666
E-Mail: info@fvlight.com
Web: www.fvlighting.com