



CM-AEF-MFT Booster

0.71x FOCAL REDUCER BOOSTER AF LENS MOUNT ADAPTER
For EF Lens to M4/3 Camera



USB Firmware
Upgrading



0.71x
Booster



Support
Auto-focus



Electronic
Aperture Control



EXIF
transmitting



IS
Function



EF-M4/3
Adapter

User Manual

Description

Commlite electronic lens mount adapter AEF-MFT Booster can change the EF Mount lens over the M4/3 Mount cameras, and meanwhile can achieve functions as: USB Firmware Upgrading; 0.71x Focal Reducer Booster; EXIF Info. Transmitting; Support Auto Focus Function; Electronic Aperture Control; Built-in IS Stabilization Function; Gold-plated Contact Pins, which satisfy all the photography or video users who need this super combination. Before usage of the adapter, please ensure the adapter is compatible with your camera and lens.

Before usage, please carefully read the user manual, and learn how to operate the item. Be sure to keep your user manual for further reading.

Notice

1. This adapter supports the Canon EF series lens and does not support EF-S series lens for the flange distance feature, and currently does not support the BMPCC camcorder;
2. This adapter is built-in with USB firmware upgrade port, please pay attention to Commlite website to learn the update information in the first place;
3. After installing AEF-MFT Booster, please set the lens to AF mode if the AF function is needed;
4. After selecting the correct shooting mode, the camera can automatically calculate the exposure time according to the real-time incoming light of the lens;
5. This adapter is built-in with optical correction group, when using the adapter, the focus of the lens should be multiplied by 0.71, then multiplied by 1.5 (the focus multiplier), the result is the lens' actually equivalent focus ;
6. For some incompatible camera and lens, one can try to use the adapter as the manual adapter; During the usage, while it shows prompt like 'Incorrect installation of lens', please set the menu mode to 'Release Shutter without Lens' or 'Shutter Priority';

Main Features

1. USB Firmware Upgrading;
2. 0.71x Focal Reducer Booster;
3. EXIF Info. Transmitting;
4. Support Auto Focus Function;
5. Electronic Aperture Control;
6. Built-in IS Stabilization Function;
7. Gold-plated Contact Pins for Great Conductivity;
8. 1/4 Bottom Tripod Base Plate;
9. CNC Processing with Aluminum Alloy Made;

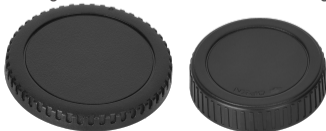
Components



Camera Connecting Side



Lens Connecting Side



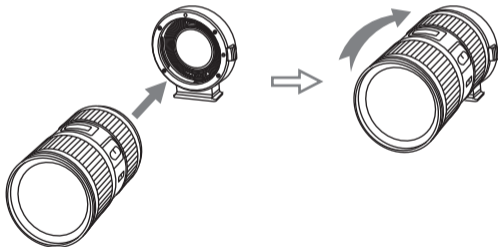
Front & Rear Cap

Assemble and Disassembling

1. Assemble

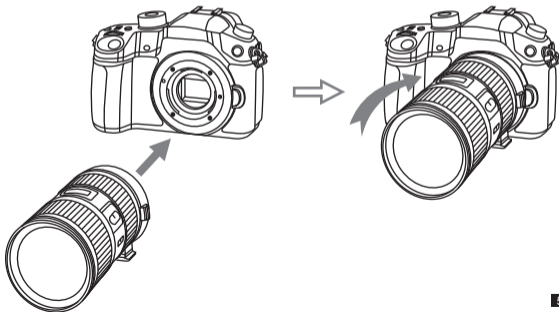
Step 1. Connect the EF lens to AEF-MFT Booster mount adapter

Refer to the follow illustration, press down the 'lens release button' of the adapter, align the red mark on the EF lens to the corresponding mark on the adapter, and turn clockwise until tightened



Step 2. Connect the mount adapter to M4/3 mount camera

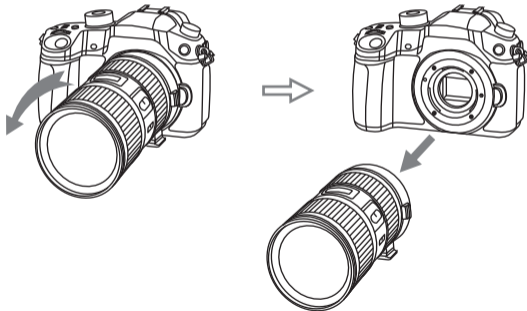
Refer to the follow illustration, press down the 'lens release button' of the M4/3 mount camera, align the red mark on the adapter to the corresponding mark on the camera, and turn clockwise until tightened



2. Disassemble

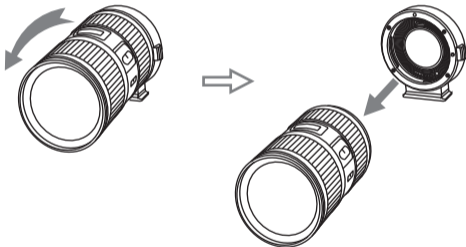
Step 1. Turn off the camera power, then take off the adapter which is connected with EF lens from M4/3 Mount camera

Refer to the follow illustration, press down the 'lens release button' of the M4/3 mount camera, turn counterclockwise the adapter which is connected with EF lens until it can be easily taken off



Step 2. Take off the EF lens from the AEF-MFT Booster mount adapter

Refer to the follow illustration, press down the 'lens release button' of the mount adapter, turn counterclockwise the EF lens until it can be easily taken off



Specification

| | |
|-----------------------------|--|
| Compatible Lens | EF Series Lens (For specific compatible lens models, please enter the official website to view the compatibility table) |
| Compatible Camera | M4/3 Mount Camera (For specific compatible camera models, please enter the official website to view the compatibility table) |
| Front Installation | EF Series Lens |
| Back Installation | M4/3 Mount Camera |
| Camera-Mount Outer Diameter | 40mm |
| Lens-Mount Outer Diameter | 65mm |
| Length | 74.5mm |
| Net Weight | 140.5g |



ShenZhen Commlite Technology Co.,LTD
Email:support@commlite.com
Web:www.commlite.com