

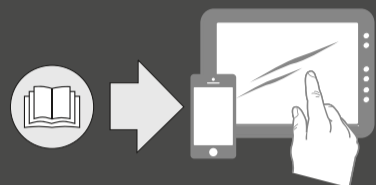


# AVX

Model: EKP AVX  
Model: SK AVX  
Model: SKM AVX  
Model: SKM-S AVX

Quick Guide	Kort vejledning
Kurzanleitung	Παράρτημα
Guide rapide	Γρήγορος οδηγός
Guía rápida	Κίσα Kilavuz
Guía de inicio rápido	Краткая инструкция
Guia rápido	快速指南
Beknopte handleiding	快速使用指南
Krótká instrukcja obsługi	クイックガイド
Snabbguide	퀵 가이드

## SENNHEISER



### Sennheiser Documentation App



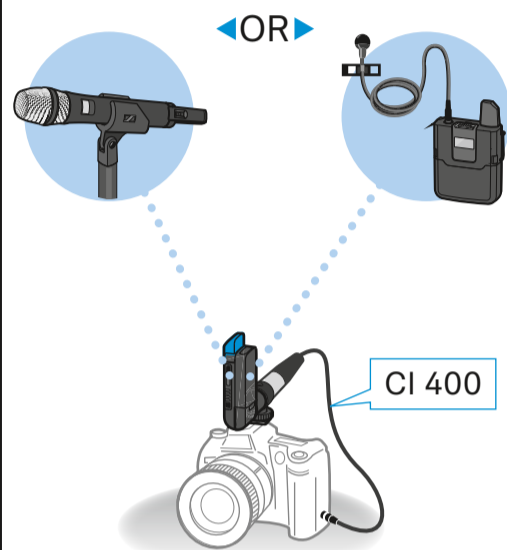
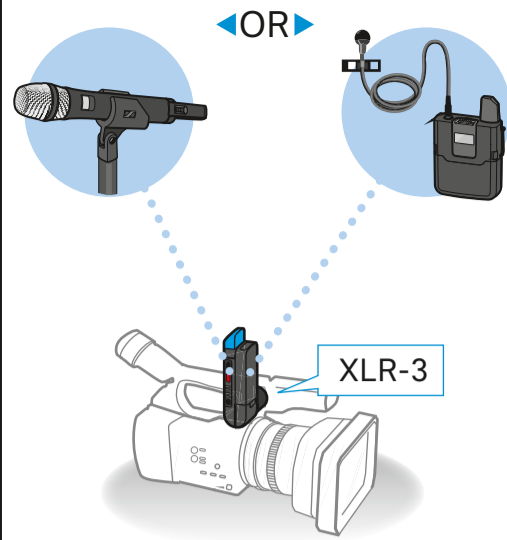
or online at [www.sennheiser.com/download](http://www.sennheiser.com/download)  
AVX\_

Sennheiser electronic GmbH & Co. KG

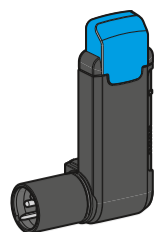
Am Labor 1, 30900 Wedemark, Germany  
[www.sennheiser.com](http://www.sennheiser.com)

Printed in Germany, Publ. 09/21, 583901/A04

### Video digital wireless



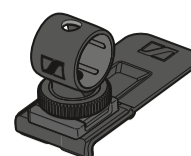
### In the box



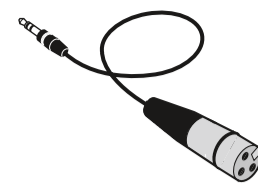
EKP AVX



BA 20



EKP AVX Adapter



CI 400

### All Sets

#### Lavalier Set (Pro)



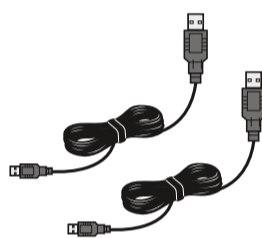
SK AVX



BA 30



ME 2 or  
MKE 2 (Pro)



#### Handheld Set



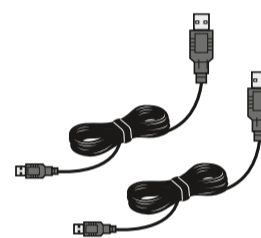
SKM AVX



BA 10



ME 2



#### Combo Set



SK AVX



BA 30



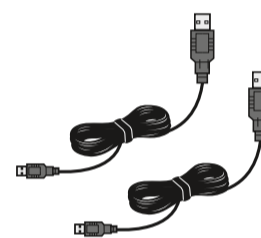
SKM AVX



BA 10

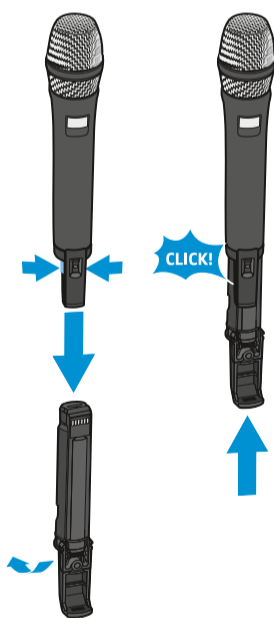


ME 2

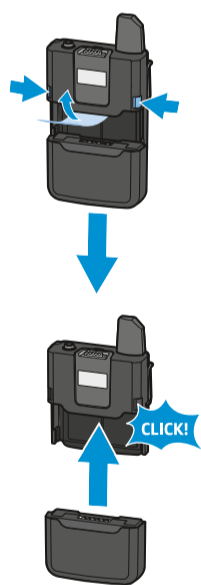


### Battery

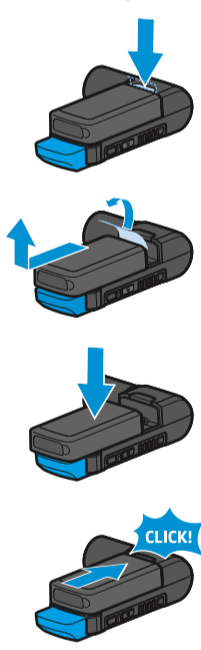
SKM AVX  
BA 10



SK AVX  
BA 30



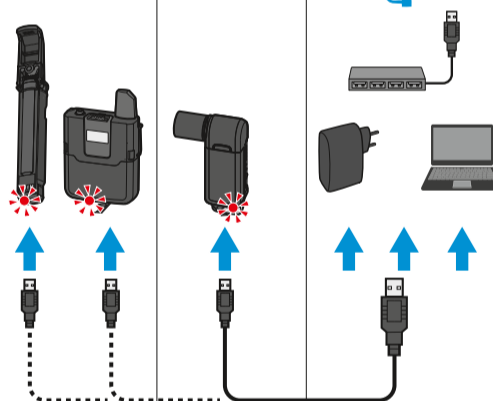
EKP AVX  
BA 20



### Charging

BA 10/BA 30

BA 20

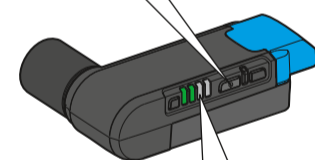


BA 10/BA 30	BA 20	Charge Level	Indicator
1:00 h	0:15 h	30%	Red star
2:00 h	0:30 h	60%	Red star
3:00 h	0:40 h	75%	Red star
4:30 h	1:15 h	100%	Green star

### Battery check

SHORT

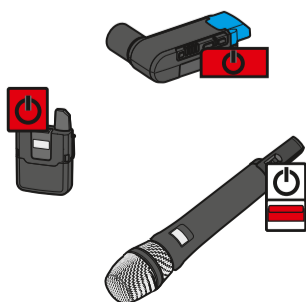
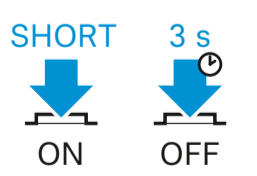
Check



Check

Check	Indicator
> 3 h	4 Green LEDs
> 2 h	3 Green LEDs
> 1 h	2 Green LEDs
> 15 min	1 Green LED
< 15 min	4 Red LEDs

### On/Off

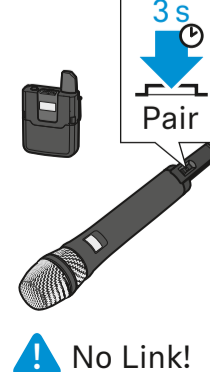
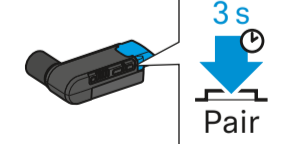


### Changing pairing

1



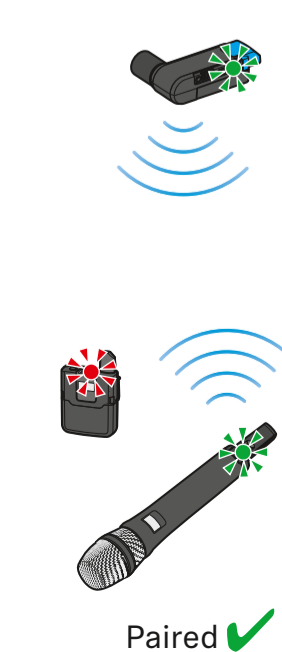
2



3



4



**Setup**

**Video camera** | XLR-3

**DSLR | 1**

**2**

**3**

**4**

**5**

**6** | CI 400

**Belt**

**i** STOP! max. 320° STOP!

**Audio level**

**1**

**2**

**3**

**Auto ON/OFF**

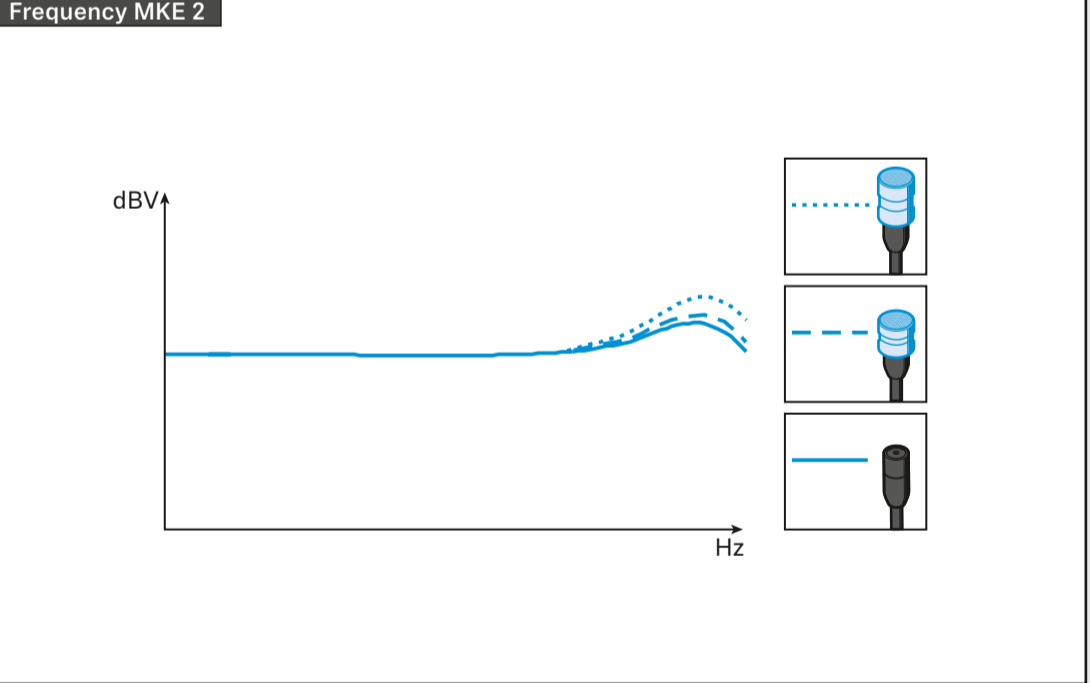
INPUT LEVEL  
 X Auto  
 ✓ Manual

LEVEL  
 X  
 ✓  
 X

AF Out

Line | Mic | Mic P48  
 OFF | ON

# MKE 2 + ME 2



**MKE 2** | **ME 2**

**ME 2 | 1**

**2**

**MKE 2 | 1**

**2A**

**2B**

**MKE 2 | 1**

**2**

**3**

**4**

-20 dB ✓

-30 dB ✓

**Clip**

**MKE 2 | 1**

**2A**

**2B**

25 cm (10")

**MKE 2 | 1**

**2**

**3**

**4**